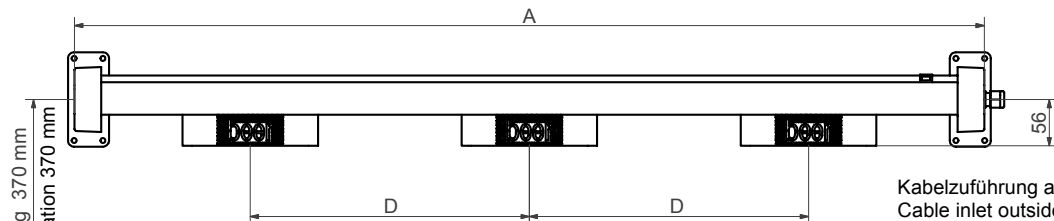
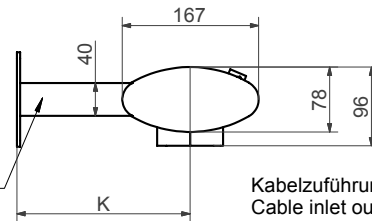


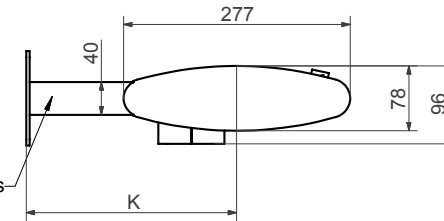
Ansicht Gäste- / Bedienungsseite
Vue customer- / operator-side



Einzelkanal
Single bridge

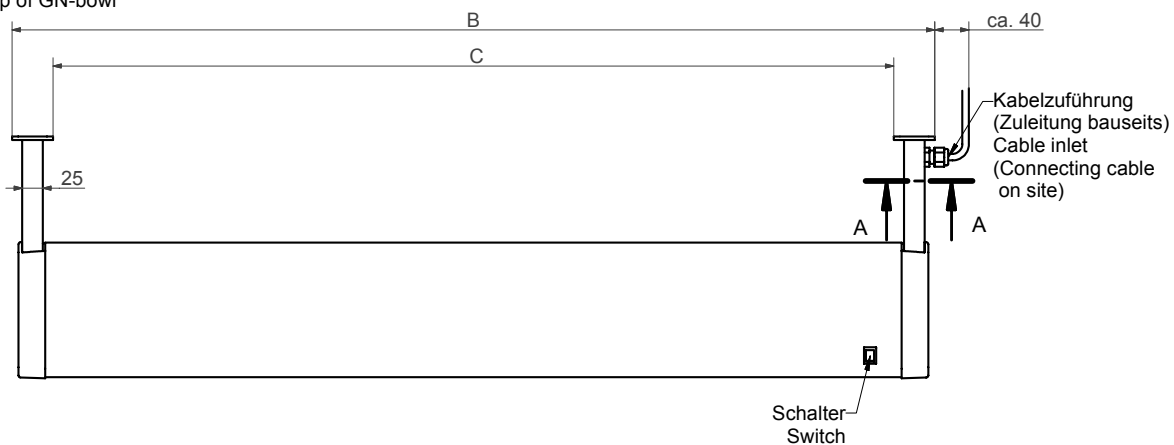


Doppelkanal
Double bridge

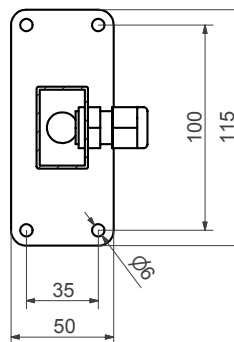


Empfehlung 370 mm
Recommendation 370 mm

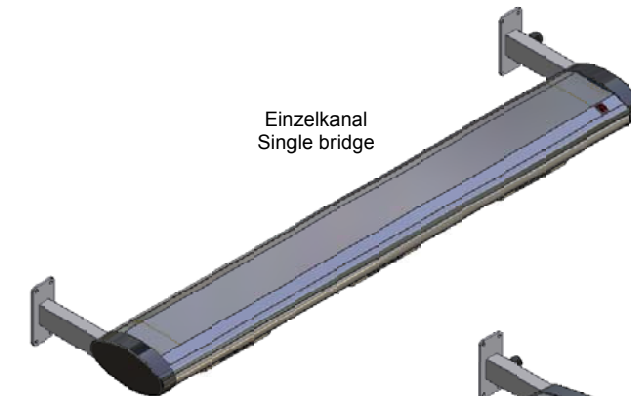
Oberkante GN-Schale
Top of GN-bowl



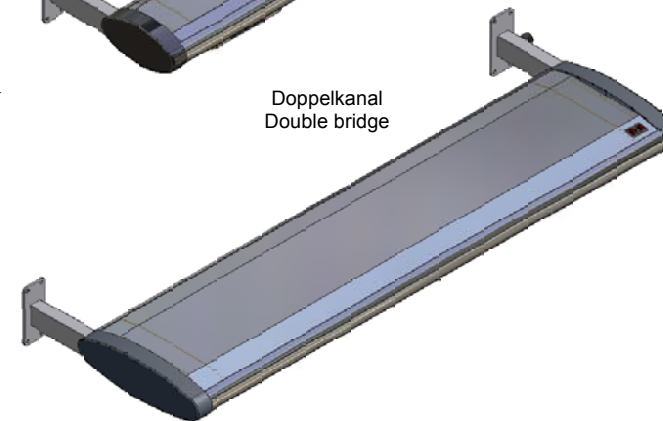
A-A (1:2)



Einzelkanal
Single bridge



Doppelkanal
Double bridge



K = kundenspezifisch max. 400 mm
K = Customer-specific max. 400 mm

Kanallänge, Standardmasse / Length of bridge, standard dimensions

Grösse/ Size [GN]	1½*	2	2½	3	3½	4	4½	5	5½	6
A [mm]	598	768	938	1108	1278	1448	1618	1788	1958	2128
B [mm]	614	784	954	1124	1294	1464	1634	1804	1974	2144
C [mm]	514	684	854	1024	1194	1364	1534	1704	1874	2044
D [mm]	-	340	380	340	380	340	380	340	380	340
Gew. E-Kanal [kg]										
Gew. D-Kanal [kg]										

* Diese Grösse mit Leuchtstoff-Lampe ist nicht erhältlich! This size is not available with fluorescent lamps!

Sondermasse auf Anfrage! Special dimensions on request!

Masszeichnung Solaris
Wandmodell Rechteckrohr geschraubt

Scale drawing Solaris
Wall-mounted model square tube screwed

Ers. durch:		
Ers. für:		
Komm.		
Gezeich.	seyda	8.9.2006
Geprüft		
Massstab	Blatt 1	
1:10 / 1:20	von 1	

beer

Beer Grill AG
CH - 5512 Vilmmergen
Tel.: +41 / (0) 56 818 78 00
Fax: +41 / (0) 56 818 78 49
e-Mail: info@beergrill.com

62-M-06-045-01